

TOM — KIRK LIGHTING

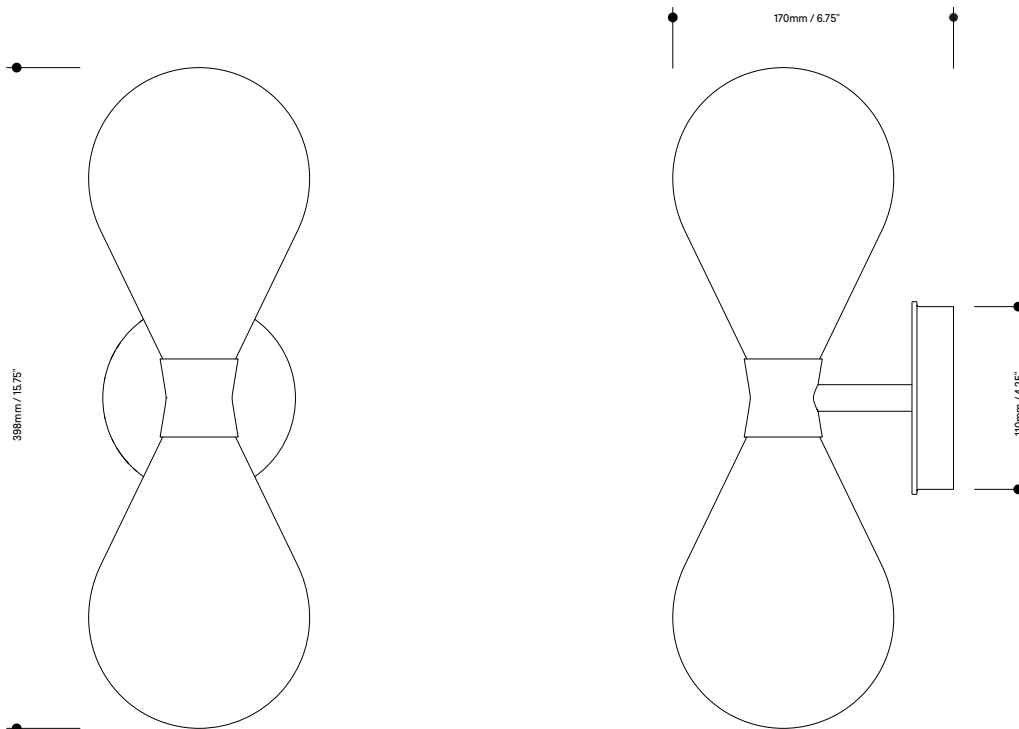
Cintola Wall Light Twin

A larger version of the Cintola Wall Light, the Twin adds vertical height and presence to the rounded profile of its sibling. Available in a range of standard and custom finishes, alongside a selection of complementary glass colours.



Cintola Wall Light Twin

Cintola Wall Light Twin



Lamp specifications UK
220-240v 50Hz 2 x 3w G9 LED

Lamp specifications USA
120v 60Hz 2 x 3w G9 Type T LED

Luminous flux / CCT
UK – 500lm 2700K
US – 600lm 2700K

Dimmable
Yes

Level of protection
IP20

Product weight
1kg / 2.2lb

Materials
Hand-blown glass and anodised
or polished aluminium

HS code
9405105000

Standards
UK
CA
CE

Metal finishes



Polished aluminium

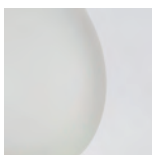


Satin gold

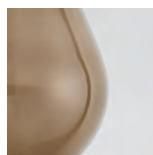


Satin bronze

Glass colours



Frosted



Bronze



Smoke grey

